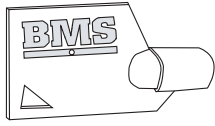
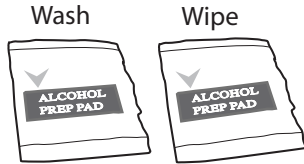


Parts Description:



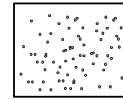
Key
(QTY 1)



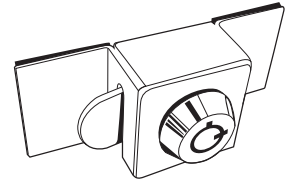
Alcohol Prep Pads
(QTY 2)



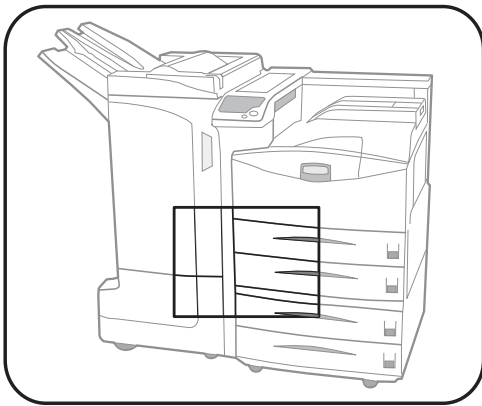
Super Glue
(QTY 1)



Scuff Pad
(QTY 1)

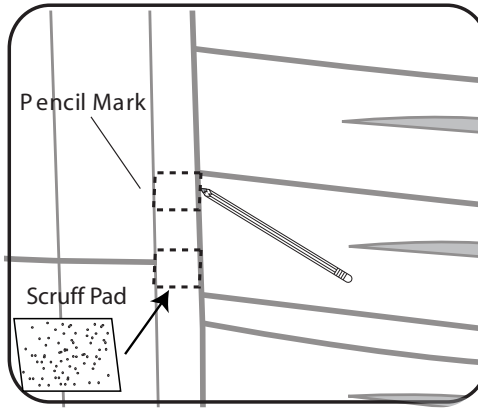


Scuff Pad
(QTY 1)



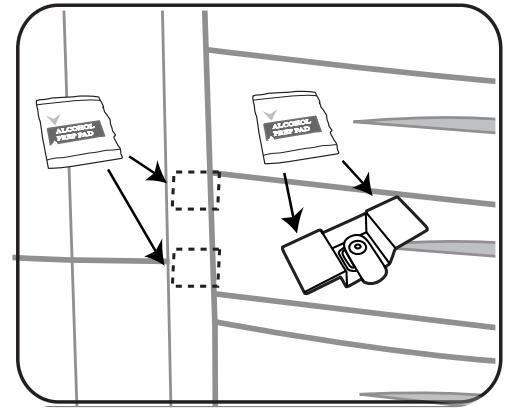
STEP 1:

Determine mounting location of the tray you are securing. *Center of the tray is best*



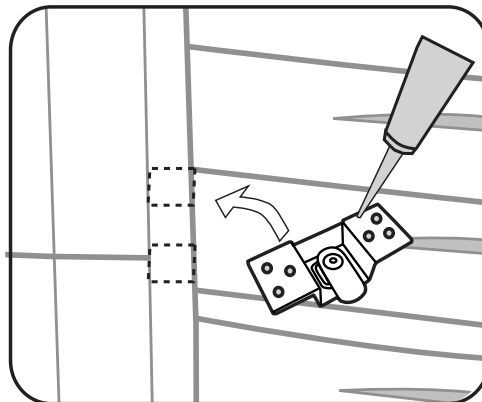
STEP 2:

Mark mounting location(s) w/ pencil. Scour with pad (provided). *Scouring mounting area will allow for a stronger bond*



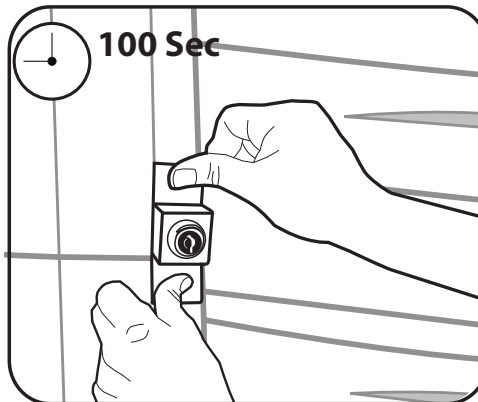
STEP 3:

Clean both the marked area & rubber on PTL Mini w/ alcohol swabs (provided)



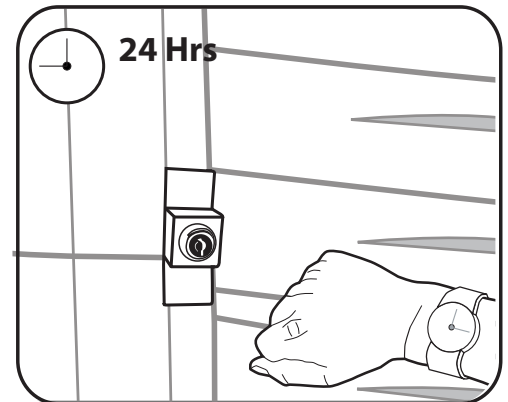
STEP 4:

Apply 3 to 4 drops of glue to each rubber pad on PTL Mini.



STEP 5:

Carefully position PTL Mini in the marked area applying constant pressure for 100 sec.



STEP 6:

It takes 24 hours for bond to fully cure so it is recommended PTL Mini be in "unlocked" position so no one tampers with lock during cure time.

