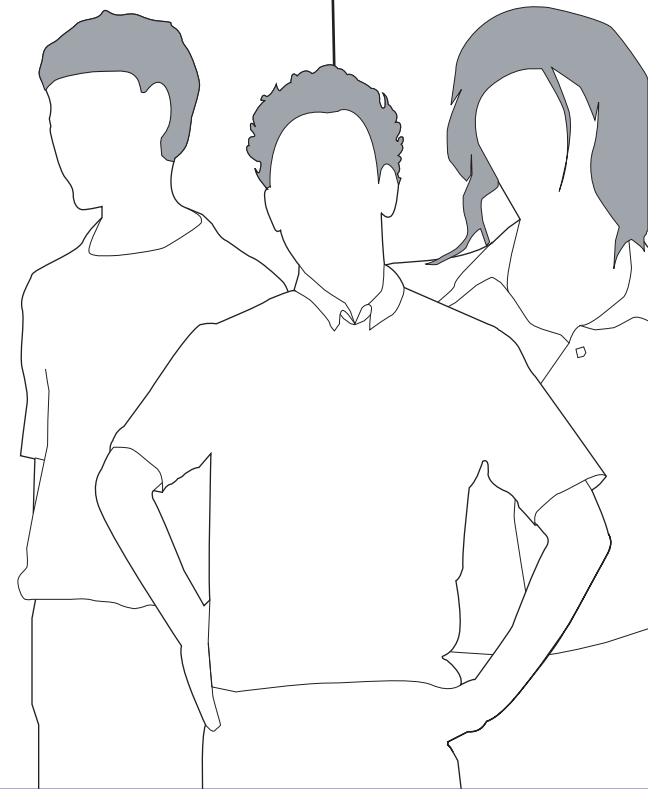
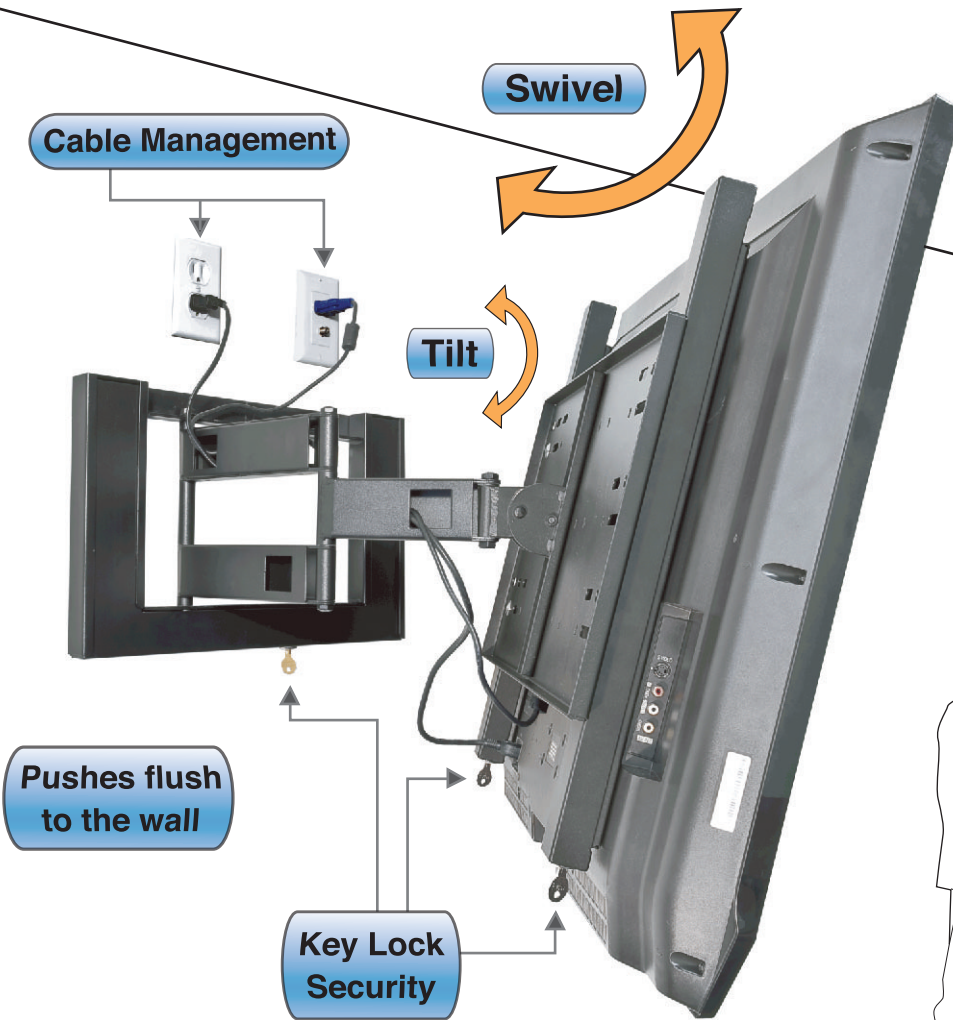


Articulating Double Arm

Model No. BMS FPM-DA-SM MSRP \$210.93



Other Models

Articulating Single Arm

Model No. BMS FPM-A-SM
MSRP \$182.43



Tilt Only

Model No. BMS FPM-T-SM
MSRP \$170.18



Flush to Wall

Model No. BMS FPM-F-SM
MSRP \$65.13



Features

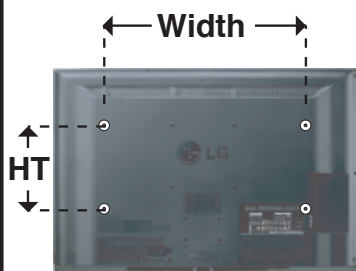
- VESA Compatible
- Double Stud Wall Mount
- Tilt - 20, Swivel - 90 (Articulating Mounts Only)
- Easy Extension for Best Viewing
- Rests Close to the Wall for a Low Profile
- Several Sizes Available
- Key Lock Security
- Use with Flat Screens up to 65"
- Ships Partially Assembled

Benefits

- Versatile
- Safe and Secure
- Ease of Use
- Cost Effective
- Matches Most Flat Panel TV's
- Protection Against Loss
- Ease of Installation

Step 2

Find your flat panel TV's VESA/hole pattern



Step 1

Choose a type of mount for your flat panel TV

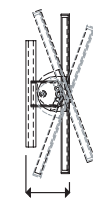
Fixed TV Mount

Side View

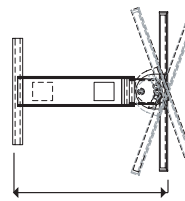


Articulating Mounting Arms

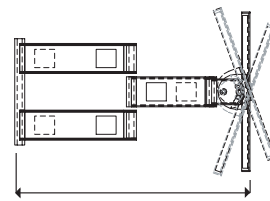
Just Tilt



Single Arm



Double Arm



Step 3

Choose the correct mount size for your flat panel TV

Fixed Wall Mount Width

- Small** - 100mm to 200mm
- Medium** - 100mm to 400mm
- Large** - 100mm to 600mm

Articulating Rail Plate Hole Pattern - Width

- RP 400** Hole Pattern 50mm to 650mm
- RP 600** Hole Pattern 50mm to 660mm
- RP 800** Hole Pattern 50mm to 800mm

+ Rails - Height

- R 400** to 400mm
- R 650** to 650mm

