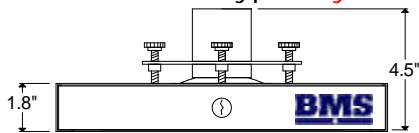


Architectural Specifications

LCD LOC II

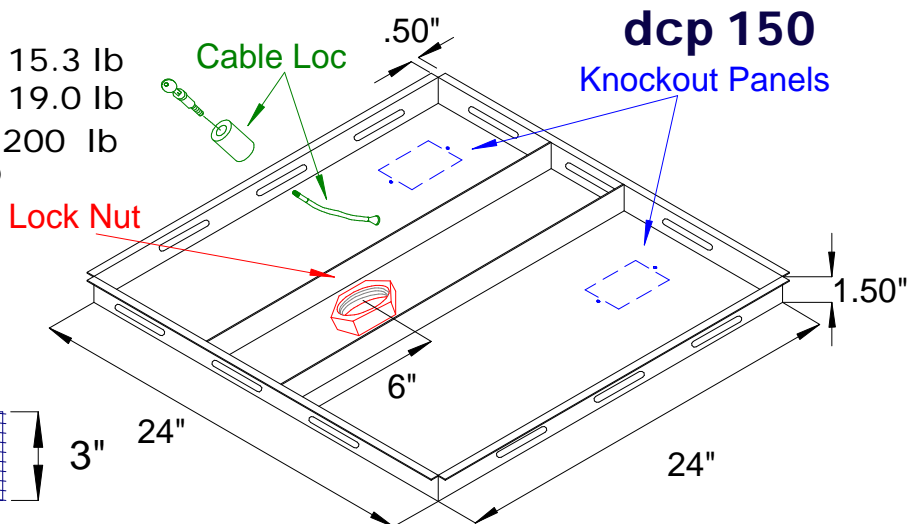
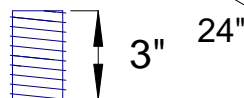
The ceiling mount for the LCD/DLP Projector shall be a **BMS** model **LCD LOC II UNIVERSAL** mount, or equivalent, and shall be mounted where indicated on the plans. The mount will feature two interlocking steel trays that provide security as well as hold the projector steady and stable during maintenance. It will feature a **high security, pick resistant, five wafer, cylindrical screw type key lock** to secure the two trays together. The mount will adjust, **without the use of tools**, 15°+/- Tilt, Pitch, Roll and swivel 360°. The finish will be scratch resistant Projector Grey powder coat. It will be shipped fully assembled and can readily be installed to any 1-1/2" NPS pipe or fitting, permanently with the provided installation material. Installation shall be according to the manufacturer instructions.

- Two interlocking steel trays provide access and stability to projector during maintenance
- Optional Cut-Outs are available for easy access to filter and lamp
- Can attach to standard 1-1/2" pipe
- High security, pick resistant, five wafer, cylindrical screw type **key lock**
- Projector Grey (standard) or Black powder coat finish
- 15°+/- Tilt, Pitch and Roll adjustments
- 360° Swivel
- 150 pounds weight capacity
- Low profile, only 4.5" high
- Four PATENTED Mounting "Flex Feet"
- Ships fully assembled



Weight: 15.3 lb
Shipping Weight: 19.0 lb
Maximum Load: 200 lb
(including Ceiling Panel, mount and hardware)

Fully threaded
1 1/2" pipe



The Drop Ceiling Panel shall be a **BMS** model DCP 150 and shall be installed where indicated on the plans. The ceiling panel shall feature a single 16 gauge metal panel 24" x 24" with a second 16 gauge metal panel 7 1/4" x 24" welded directly on top of it. The Ceiling Panel shall feature two knockout panels for electrical and audio video boxes and shall contain a 1 1/2" NPS lock nut welded in place. It shall include a 1 1/2" x 3" NPS threaded pipe. It shall feature a high security pick resistant screw type key lock that can be keyed alike to the BMS LCD Projector Mount and contain a security cable to secure the Ceiling Panel to the ceiling. It shall feature a hanger wire support system to attach the Ceiling Panel to the true ceiling. It shall feature a white powder coat finish. Installation and assembly shall be done to the manufacturer instructions.